

PEGASUS



PEGASUS - brushed stainless steel, 608 × 1700 mm, with valve CUBE stainless steel, chrome hangers



PEGASUS - white coated, 608 × 800 mm with valve COMBI, chrome hanger

PEGASUS



PEGASUS - claret coated (structural colour)
608 × 1220 mm, chrome hanger



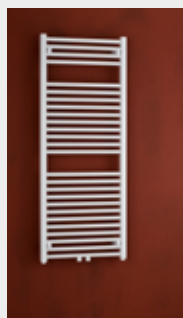
PEGASUS - anthracite coated
1208 × 500 mm



PEGASUS - anthracite
608 × 1220 mm, chrome hanger

On the back side there is a steel radiator, over which the cover panel is fitted by strong magnets, which are on the inside face and the side edges of the radiator cover panel. Radiator behind is always coated white. More info available on www.pmh-co.cz

MOUNTING PROCEDURE:



STEP 1



STEP 2



STEP 3

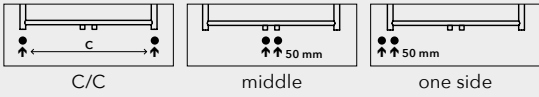


STEP 4

PEGASUS

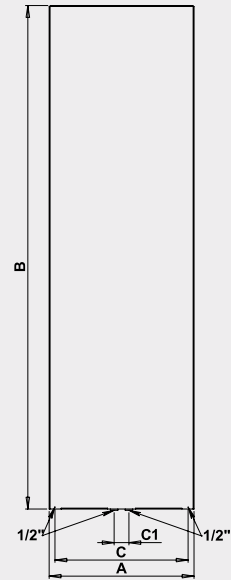
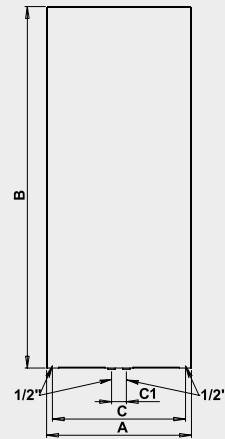
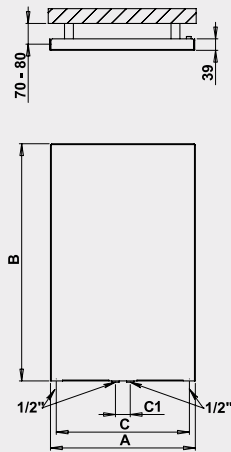
Central heating: YES
Combination heating: YES
Electric heating: YES

Connection options:



Chrome hangers

PGH1	490 × 164 mm
PGH2	605 × 164 mm
PGH3	760 × 164 mm
DH	760 × 164 mm
PGH1H	490 × 164 mm
PGH2H	605 × 164 mm
PGH3H	760 × 164 mm



Chrome hanger PGH1



Chrome hanger DH



Chrome hanger PGH1H - square

Polished stainless steel	Brushed stainless	White coated	Other surface finish (coated)*	Width (A) x Height (B) [mm]	HO [W] Δt 20°C**		Weight [kg]	Content [l]	Connection span (C/C1) [mm]	Max. recommended electric heating element [W]
					75/65°C	55/45°C				
PG1C	PG1SS	PG1W	PG1	488 × 800	329	171	9,0	4,2	450/50	200
PG2C	PG2SS	PG2W	PG2	608 × 800	445	231	11,0	4,9	570/50	300
PG3C	PG3SS	PG3W	PG3	758 × 800	540	281	13,5	5,9	720/50	300
PG4C	PG4SS	PG4W	PG4	488 × 1220	523	272	14,0	6,6	450/50	300
PG5C	PG5SS	PG5W	PG5	608 × 1220	682	355	16,8	7,9	570/50	400
PG6C	PG6SS	PG6W	PG6	758 × 1220	835	434	20,0	9,4	720/50	500
PG7C	PG7SS	PG7W	PG7	488 × 1700	716	372	19,9	9,0	450/50	400
PG8C	PG8SS	PG8W	PG8	608 × 1700	928	483	22,8	10,7	570/50	600
PG9C	PG9SS	PG9W	PG9	758 × 1700	1146	596	27,4	12,8	720/50	700
Horizontal design										
PGLC	PGLSS	PGLW	PGL	1208 × 500	523	272	14,0	6,6	1170/50	300

*Other surface finishes see page 78. **Calculation of temperature gradients can be viewed on www.pmh-co.cz.