

MONTÁŽNÍ NÁVOD
MOUNTING INSTRUCTION



ventil CUBE-CE/ valve CUBE-CE



Popis:

Koaxiální ventil pravý/levý pro
měděné nebo plastové potrubí.

Technické parametry:

Pracovní tlak: 10 Bar

Maximální teplota: 100 °C

Materiál:

Tělo: mosaz EN 12165 – CW617N

Description:

Coaxial valve right/left for copper or
plastic pipe.

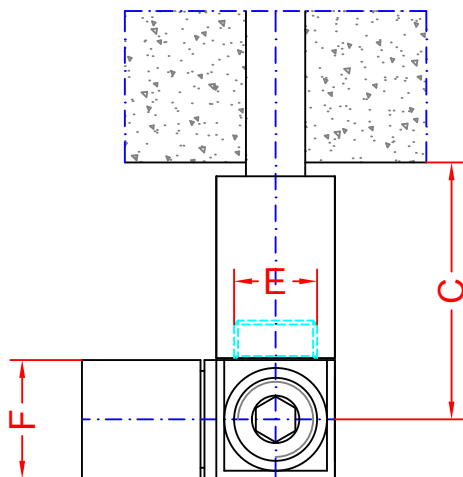
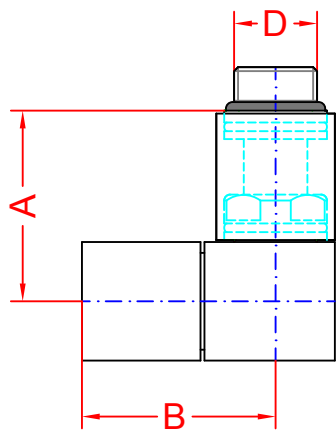
Technical features

Max working pressure : 10 Bar

Max temperature : 100° C

Material:

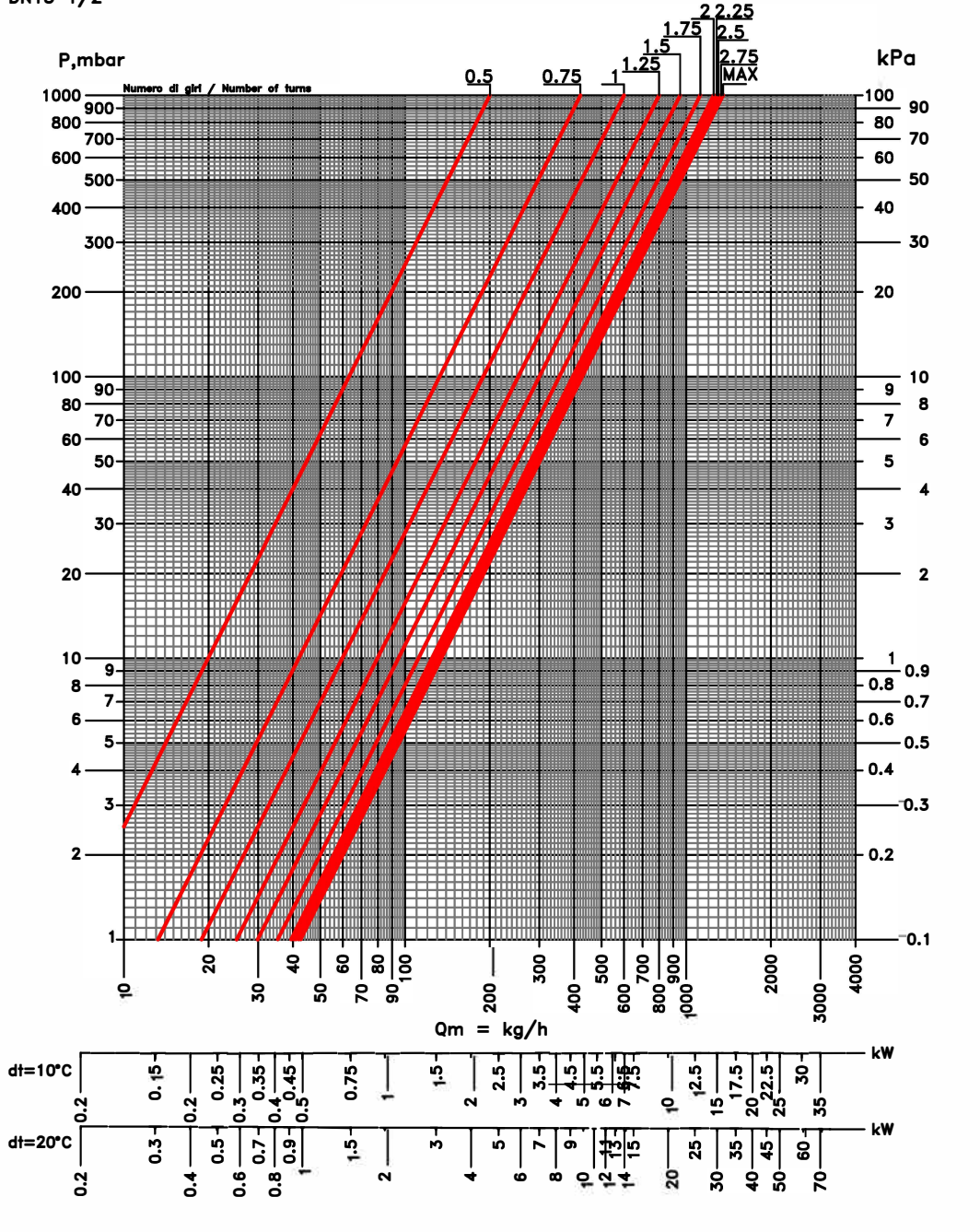
Body : brass EN 12165 -CW617N



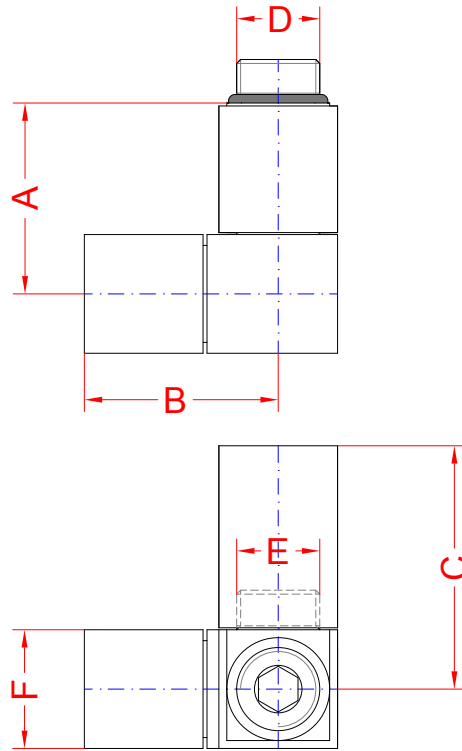
Kód / Code	D	A	B	C	E	F
CUBE-CE	1/2	48	49	65	1/2	30



CUBE-CORNER MANUALE / MANUAL
DN15 1/2"



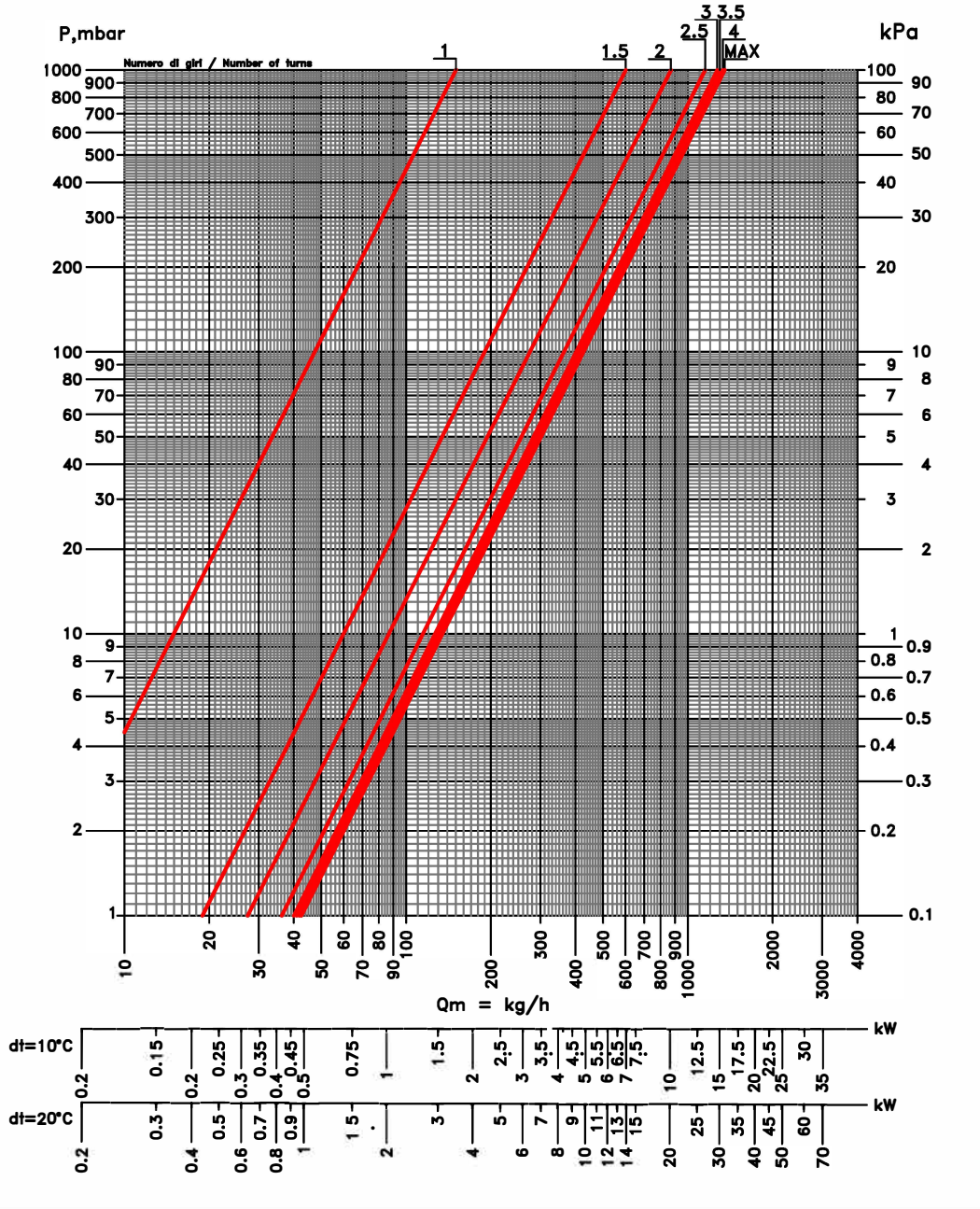
	0.5	0.75	1	1.25	1.5	1.75	2	2.25	2.5	2.75	3	MAX	
KV	0.20	0.42	0.60	0.80	0.95	1.12	1.25	1.28	1.30	1.33	1.35	1.38	



Kód / Code	D	A	B	C	E	F
CUBE-CE	1/2	48	49	61,5	1/2	30



CUBE-CORNER DETENTORE / LOCKSHIELD
DN15 1/2"



	1	1.5	2	2.5	3	3.5	4	MAX	
KV	0.15	0.60	0.87	1.15	1.27	1.30	1.33	1.35	